



# RAFFLES

## Yacht Group

### GYPSEA



<b>LOA:</b>	52' 2" (15.9m)	<b>Delivery/Model Year:</b>	2012
<b>Beam:</b>	15' 1" (4.59m)	<b>Builder:</b>	RAFFLES
<b>Tonnage:</b>	19.00	<b>Type:</b>	Trawler Yacht Pilothouse
<b>Speed:</b>	9 Knots 14 Knots	<b>Staterooms:</b>	3
<b>Location:</b>	Singapore, Central Singapore Community Development Council Singapore	<b>Fuel Cap:</b>	2700 L (713.26 Gal)
<b>VAT Paid:</b>	No Duty Paid	<b>Water Cap:</b>	500 L (132.09 Gal)
		<b>Engines:</b>	2x, Cummins, QSB 6.7, 380 HP
		<b>Price:</b>	\$390,000 USD

Generated On 5/4/2026 11:47 AM by Diederik Brinkman

**Raffles Yacht Pte Ltd**  
 2B, Rochalie Drive  
 Singapore Central Singapore  
 Community Development Council  
 248231 Singapore

**Diederik Brinkman**  
 P: +65 6235 3701  
 M: +6581783058  
 d.brinkman@rafflesyacht.com.sg  
 http://www.rafflesyacht.com.sg/

**GYPSEA**

Page 1 of 17

**Additional Specifications For GYPSEA:**

<b>LOA:</b>	52' 2" (15.9m)	<b>Delivery/Model</b>	2012
<b>Beam:</b>	15' 1" (4.59m)	<b>Year:</b>	
<b>Min Draft:</b>	4' 5" (1.34m)	<b>Year Built:</b>	2011
<b>Hull Material:</b>	FRP	<b>Refit Year:</b>	2024
<b>Hull Config:</b>	Full Displacement	<b>Builder:</b>	RAFFLES
<b>Deck Material:</b>	FRP	<b>Type:</b>	Trawler Yacht Pilothouse
<b>Tonnage:</b>	19.00	<b>Top:</b>	Raised Pilothouse
<b>Range At Cruise</b>	400	<b>Engines:</b>	380 HP, Twin, 2009, Inboard, Diesel, Cummins, QSB 6.7, 2300hrs / 2400hrs
<b>Speed:</b>		<b>Staterooms:</b>	3
<b>Range At Max</b>		<b>Heads:</b>	2
<b>Speed:</b>	Cruising 9 Knots	<b>Captain Cabin:</b>	No
	Max 14 Knots	<b>Classifications:</b>	Bureau Veritas CE B
<b>Fuel Capacity:</b>	2700 L (713.26 Gal)	<b>MCA: ISM:</b>	
<b>Water Capacity:</b>	500 L (132.09 Gal)		
<b>Holding Tank:</b>	220 L (58.12 Gal)		
<b>Location:</b>	Singapore, Central Singapore Community Development Council Singapore		
<b>Price:</b>	\$390,000 USD		
<b>Tax Status:</b>	No Duty Paid		



## **GENERAL INFORMATION**

The **Aquitalia Trawler 53** is the flagship of the **Aquitalia trawler** range, and she really has big boat character. This stunning boat looks and feels far larger than her actual size.

With a vast amount of onboard space ranging from the amazing full bow master cabin, spacious saloon, extensive Flybridge and deck space, the AY53T invites you to sail away in absolute comfort. This well build example has just undergone a complete refit by the original shipyard, low engine hours and is kitted out to a very high standard for comfortable cruising. Newly polished hull, superstructure and painted interior, making her look brand new again.

Photos and GA are of her Sistership. Actually, no crew cabin

Generated On 5/4/2026 11:47 AM by Diederik Brinkman

**Raffles Yacht Pte Ltd**  
2B, Rochalie Drive  
Singapore Central Singapore  
Community Development Council  
248231 Singapore

**Diederik Brinkman**  
P: +65 6235 3701  
M: +6581783058  
d.brinkman@rafflesyacht.com.sg  
<http://www.rafflesyacht.com.sg/>

**GYPSEA**

Page 3 of 17



Generated On 5/4/2026 11:47 AM by Diederik Brinkman

**Raffles Yacht Pte Ltd**  
2B, Rochalie Drive  
Singapore Central Singapore  
Community Development Council  
248231 Singapore

**Diederik Brinkman**  
P: +65 6235 3701  
M: +6581783058  
d.brinkman@rafflesyacht.com.sg  
<http://www.rafflesyacht.com.sg/>

**GYPSEA**



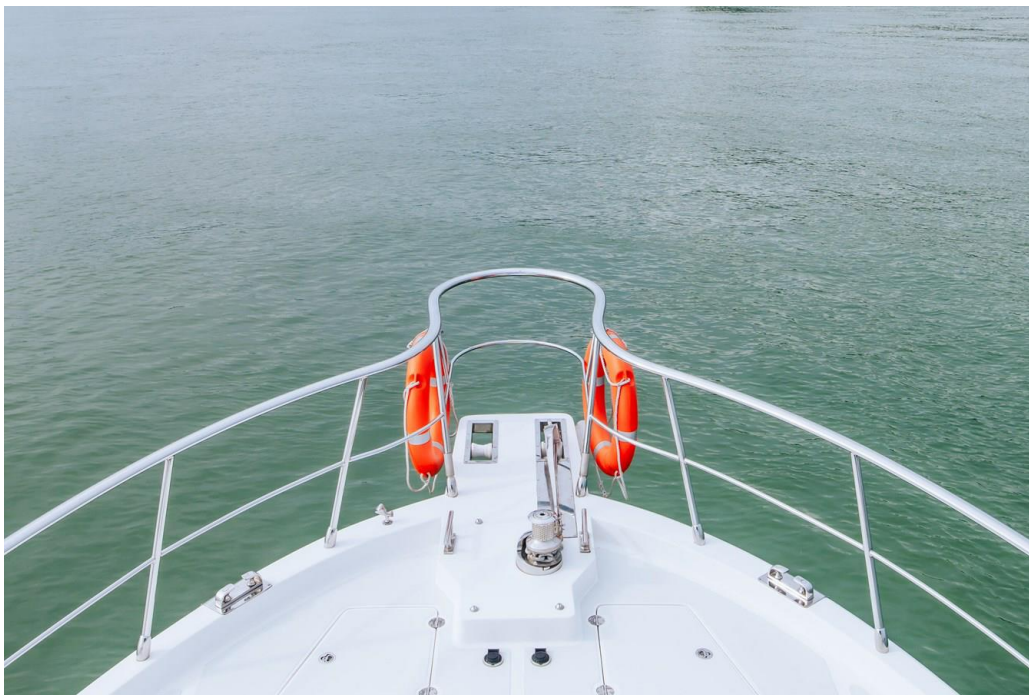
Generated On 5/4/2026 11:47 AM by Diederik Brinkman

**Raffles Yacht Pte Ltd**  
2B, Rochalie Drive  
Singapore Central Singapore  
Community Development Council  
248231 Singapore

**Diederik Brinkman**  
P: +65 6235 3701  
M: +6581783058  
d.brinkman@rafflesyacht.com.sg  
<http://www.rafflesyacht.com.sg/>

**GYPSEA**

Page 5 of 17



Generated On 5/4/2026 11:47 AM by Diederik Brinkman

**Raffles Yacht Pte Ltd**  
2B, Rochalie Drive  
Singapore Central Singapore  
Community Development Council  
248231 Singapore

**Diederik Brinkman**  
P: +65 6235 3701  
M: +6581783058  
d.brinkman@rafflesyacht.com.sg  
<http://www.rafflesyacht.com.sg/>

**GYPSEA**



Generated On 5/4/2026 11:47 AM by Diederik Brinkman

**Raffles Yacht Pte Ltd**  
2B, Rochalie Drive  
Singapore Central Singapore  
Community Development Council  
248231 Singapore

**Diederik Brinkman**  
P: +65 6235 3701  
M: +6581783058  
d.brinkman@rafflesyacht.com.sg  
<http://www.rafflesyacht.com.sg/>

**GYPSEA**



Generated On 5/4/2026 11:47 AM by Diederik Brinkman

**Raffles Yacht Pte Ltd**  
2B, Rochalie Drive  
Singapore Central Singapore  
Community Development Council  
248231 Singapore

**Diederik Brinkman**  
P: +65 6235 3701  
M: +6581783058  
d.brinkman@rafflesyacht.com.sg  
<http://www.rafflesyacht.com.sg/>

**GYPSEA**



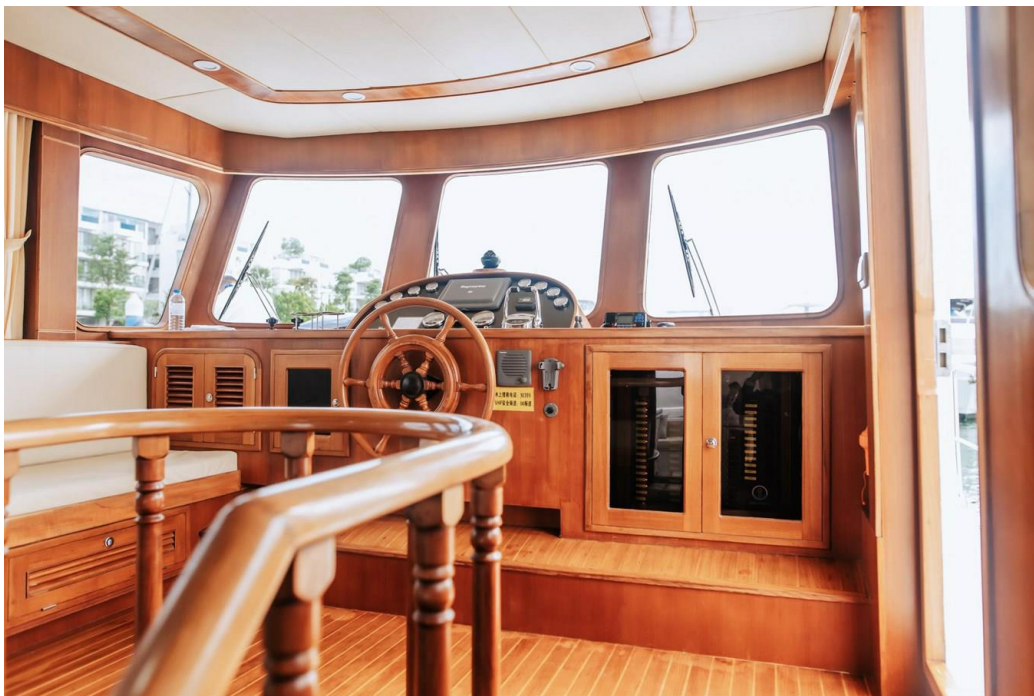
Generated On 5/4/2026 11:47 AM by Diederik Brinkman

**Raffles Yacht Pte Ltd**  
2B, Rochalie Drive  
Singapore Central Singapore  
Community Development Council  
248231 Singapore

**Diederik Brinkman**  
P: +65 6235 3701  
M: +6581783058  
d.brinkman@rafflesyacht.com.sg  
<http://www.rafflesyacht.com.sg/>

**GYPSEA**

Page 9 of 17



Generated On 5/4/2026 11:47 AM by Diederik Brinkman

**Raffles Yacht Pte Ltd**  
2B, Rochalie Drive  
Singapore Central Singapore  
Community Development Council  
248231 Singapore

**Diederik Brinkman**  
P: +65 6235 3701  
M: +6581783058  
d.brinkman@rafflesyacht.com.sg  
<http://www.rafflesyacht.com.sg/>

**GYPSEA**

Page 10 of 17



Generated On 5/4/2026 11:47 AM by Diederik Brinkman

**Raffles Yacht Pte Ltd**  
2B, Rochalie Drive  
Singapore Central Singapore  
Community Development Council  
248231 Singapore

**Diederik Brinkman**  
P: +65 6235 3701  
M: +6581783058  
d.brinkman@rafflesyacht.com.sg  
<http://www.rafflesyacht.com.sg/>

**GYPSEA**



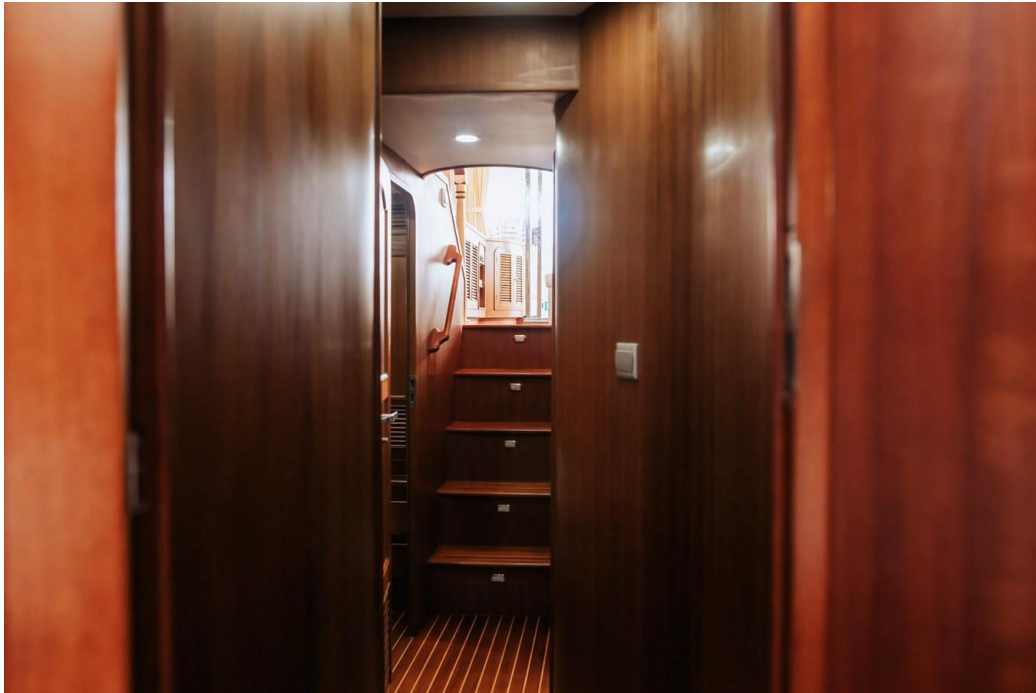
Generated On 5/4/2026 11:47 AM by Diederik Brinkman

**Raffles Yacht Pte Ltd**  
2B, Rochalie Drive  
Singapore Central Singapore  
Community Development Council  
248231 Singapore

**Diederik Brinkman**  
P: +65 6235 3701  
M: +6581783058  
d.brinkman@rafflesyacht.com.sg  
<http://www.rafflesyacht.com.sg/>

**GYPSEA**

Page 12 of 17



Generated On 5/4/2026 11:47 AM by Diederik Brinkman

**Raffles Yacht Pte Ltd**  
2B, Rochalie Drive  
Singapore Central Singapore  
Community Development Council  
248231 Singapore

**Diederik Brinkman**  
P: +65 6235 3701  
M: +6581783058  
d.brinkman@rafflesyacht.com.sg  
<http://www.rafflesyacht.com.sg/>

**GYPSEA**

Page 13 of 17



Generated On 5/4/2026 11:47 AM by Diederik Brinkman

**Raffles Yacht Pte Ltd**  
2B, Rochalie Drive  
Singapore Central Singapore  
Community Development Council  
248231 Singapore

**Diederik Brinkman**  
P: +65 6235 3701  
M: +6581783058  
d.brinkman@rafflesyacht.com.sg  
<http://www.rafflesyacht.com.sg/>

**GYPSEA**



Generated On 5/4/2026 11:47 AM by Diederik Brinkman

**Raffles Yacht Pte Ltd**  
2B, Rochalie Drive  
Singapore Central Singapore  
Community Development Council  
248231 Singapore

**Diederik Brinkman**  
P: +65 6235 3701  
M: +6581783058  
d.brinkman@rafflesyacht.com.sg  
<http://www.rafflesyacht.com.sg/>

**GYPSEA**



Generated On 5/4/2026 11:47 AM by Diederik Brinkman

**Raffles Yacht Pte Ltd**  
2B, Rochalie Drive  
Singapore Central Singapore  
Community Development Council  
248231 Singapore

**Diederik Brinkman**  
P: +65 6235 3701  
M: +6581783058  
d.brinkman@rafflesyacht.com.sg  
<http://www.rafflesyacht.com.sg/>

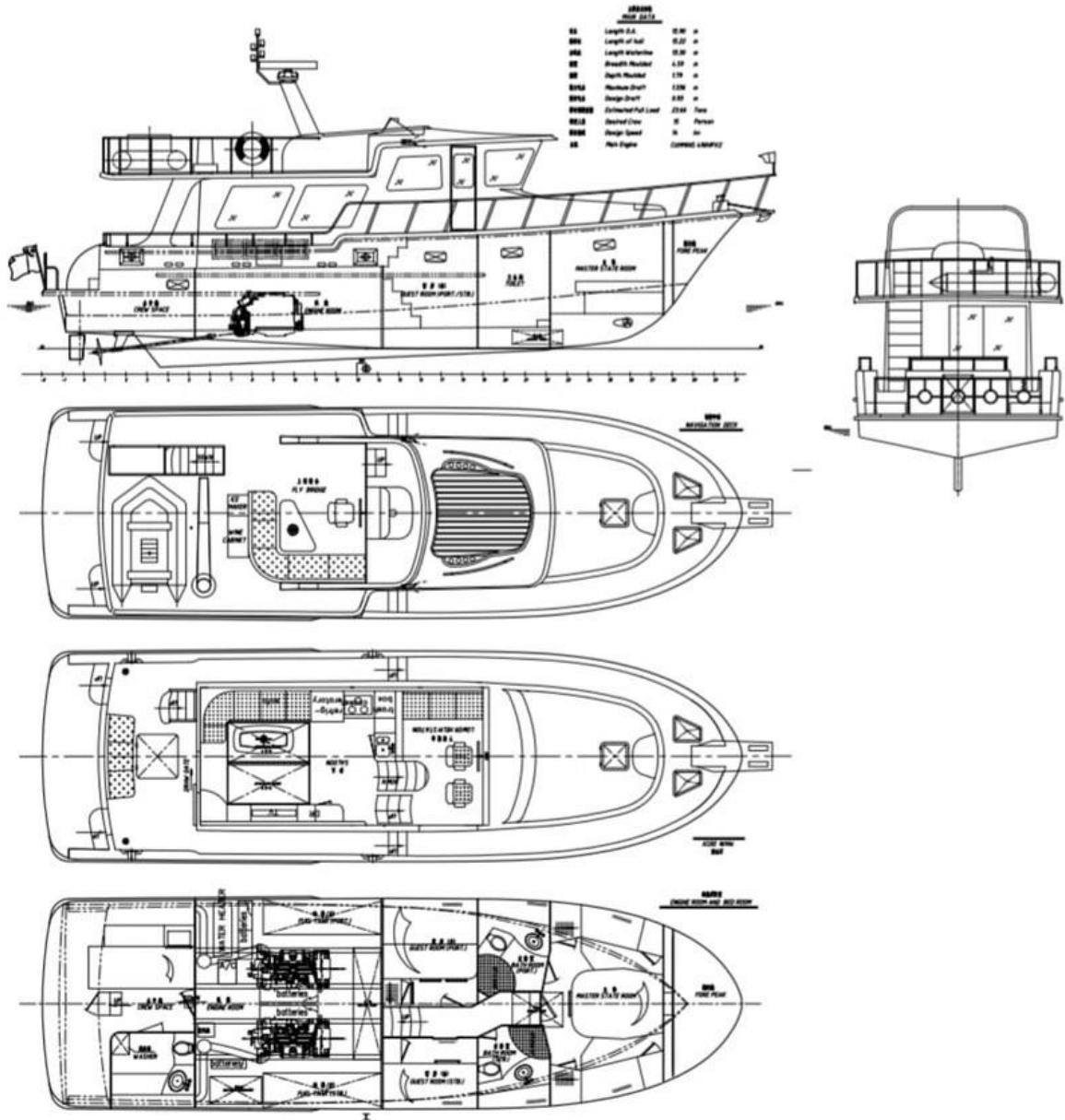
**GYPSEA**



# RAFFLES

## Yacht Group

GA



Generated On 5/4/2026 11:47 AM by Diederik Brinkman

**Raffles Yacht Pte Ltd**  
2B, Rochalie Drive  
Singapore Central Singapore  
Community Development Council  
248231 Singapore

**Diederik Brinkman**  
P: +65 6235 3701  
M: +6581783058  
d.brinkman@rafflesyacht.com.sg  
<http://www.rafflesyacht.com.sg/>

**GYPSEA**